

REO-1 is designed as portable independent instrument which allows operation with a quantitative instrument, such as the REO-22 or a stand alone qualitative instrument for empirical analysis. The REO-1 machining accurately positions plastic foil, glass substrate or S.E.M. substrate at a slight incline or parallel to the horizontal surface of two-(2) high gradient magnets. Graduates syringes, manufactured by ISO-594 standards, deposits the lubricant sample on the substrate surface at a controlled rate.

Representative equipment lubricant sample is prepared by the use of fixer with the lubricant to improve equipment particle precipitation and attraction to high gradient magnetic field. As the lubricant solution flows between the north and south poles of the high gradient magnets, this controlled flow pattern is achieved by the specially designed substrate which allow particles to arrange themselves according size, composition and concentration.

The calculated 55mm substrate length controls the particle pattern of deposition, which spreads equipment particles out for improved resolution and discrimination between large and small particles.

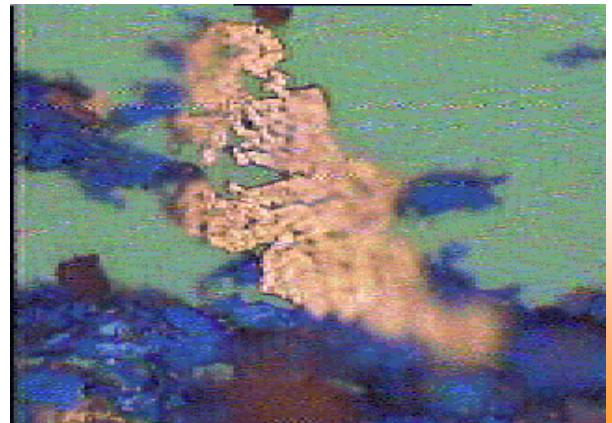
Upon completion of dispensing of lubricant fixer solution from syringe, the substrate is rinsed clean of all residual lubricant with the appropriate fixer solution which remove the substrate from the **REO-1 Ferrograph Maker** apparatus for distribution of metal and non-metal particles on various substrate media.
(glass, plastic foil or S.E.M.)

English Documentation

1 Year Warranty (220 V / 50HZ) or (120 VAC/ 60 Hz)
3 and 5 Year Warranty on REO-1 (Optional) Call for pricing



ROLLING CONTACT (Bearing) WEAR: Heat Tempered
Particles applied to substrate by REO-1 Instrument



ROLLING CONTACT (Bearing) WEAR:

Copper Alloy (including Brass & Borinze) &
High Carbon (~12%) steel wear particles
Particles applied to substrate by REO-1 Instrument

SPECIFICATIONS:

Width: 280 mm (11.2 inches)
Height: 90 mm (3.6 inches)
Depth: 220 mm (8.8 inches)
Weight: 5.1 kg (11.25 lbs.)

Cycle Time: 10-15min. (automatic shutoff)
Switch: Power ON/OFF
Power: 120 VAC/60 Hz 220 VAC/50Hz
(as specified)